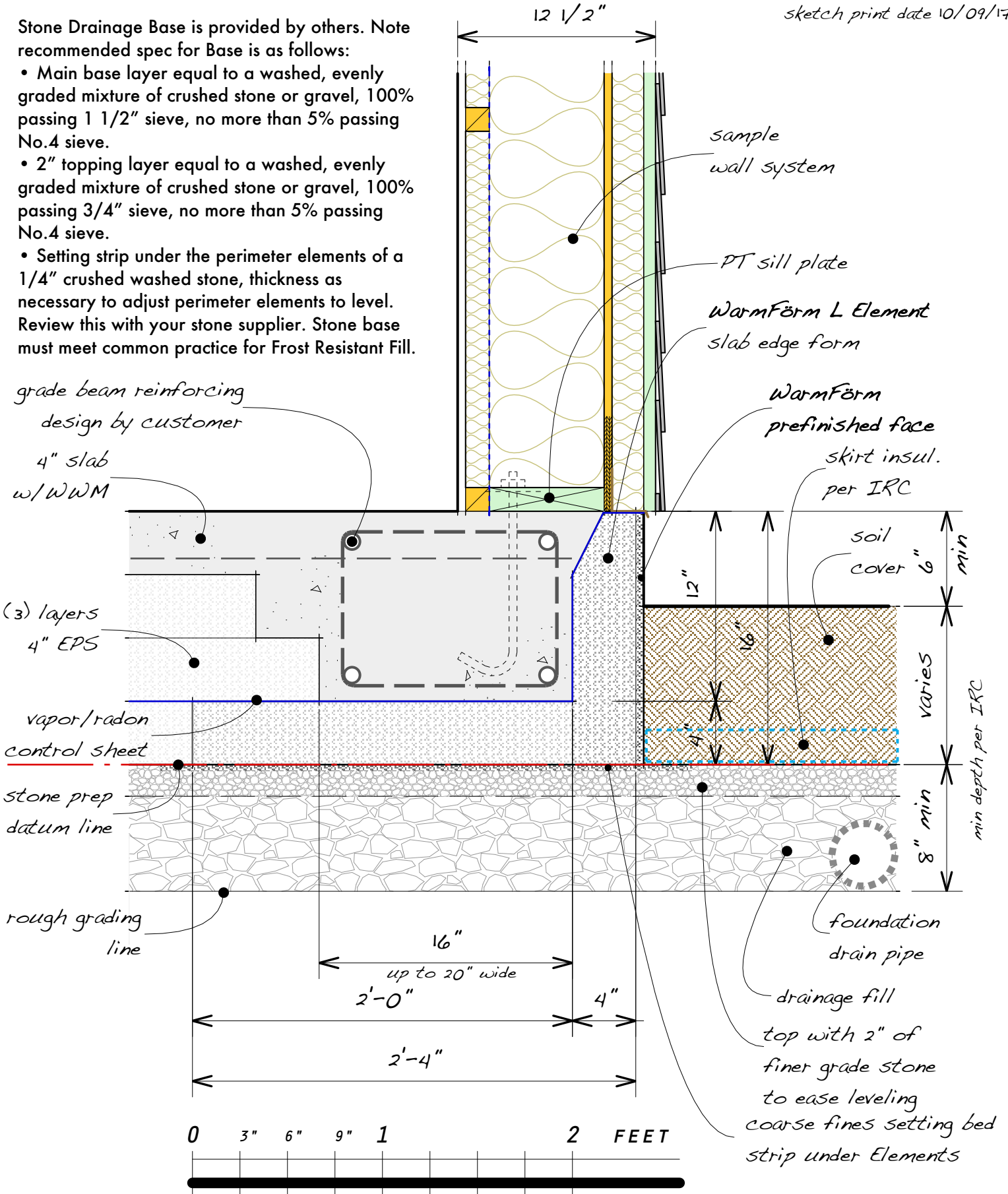


sketch print date 10/09/17

Stone Drainage Base is provided by others. Note recommended spec for Base is as follows:

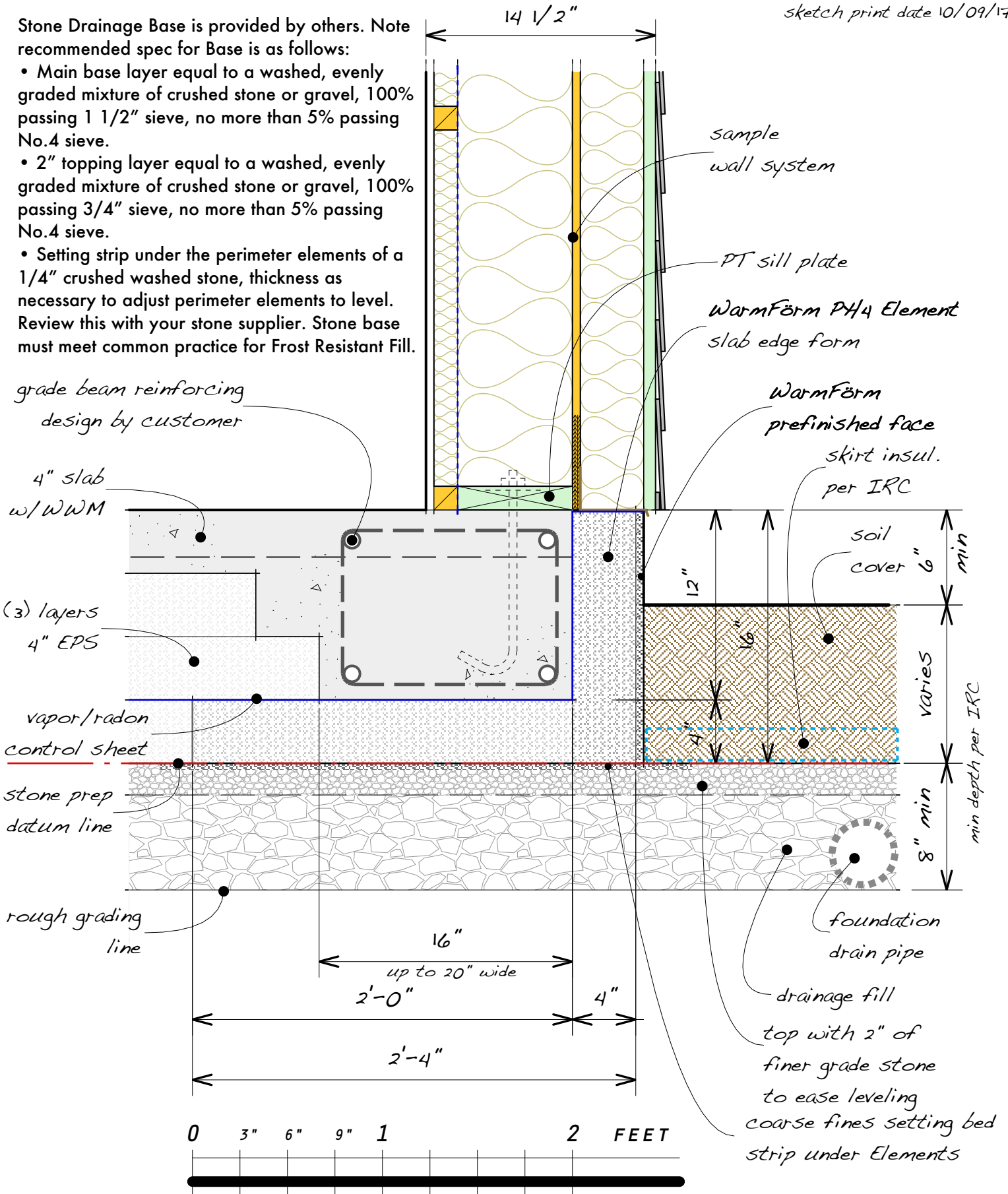
- Main base layer equal to a washed, evenly graded mixture of crushed stone or gravel, 100% passing 1 1/2" sieve, no more than 5% passing No.4 sieve.
- 2" topping layer equal to a washed, evenly graded mixture of crushed stone or gravel, 100% passing 3/4" sieve, no more than 5% passing No.4 sieve.
- Setting strip under the perimeter elements of a 1/4" crushed washed stone, thickness as necessary to adjust perimeter elements to level. Review this with your stone supplier. Stone base must meet common practice for Frost Resistant Fill.



sketch print date 10/09/17

Stone Drainage Base is provided by others. Note recommended spec for Base is as follows:

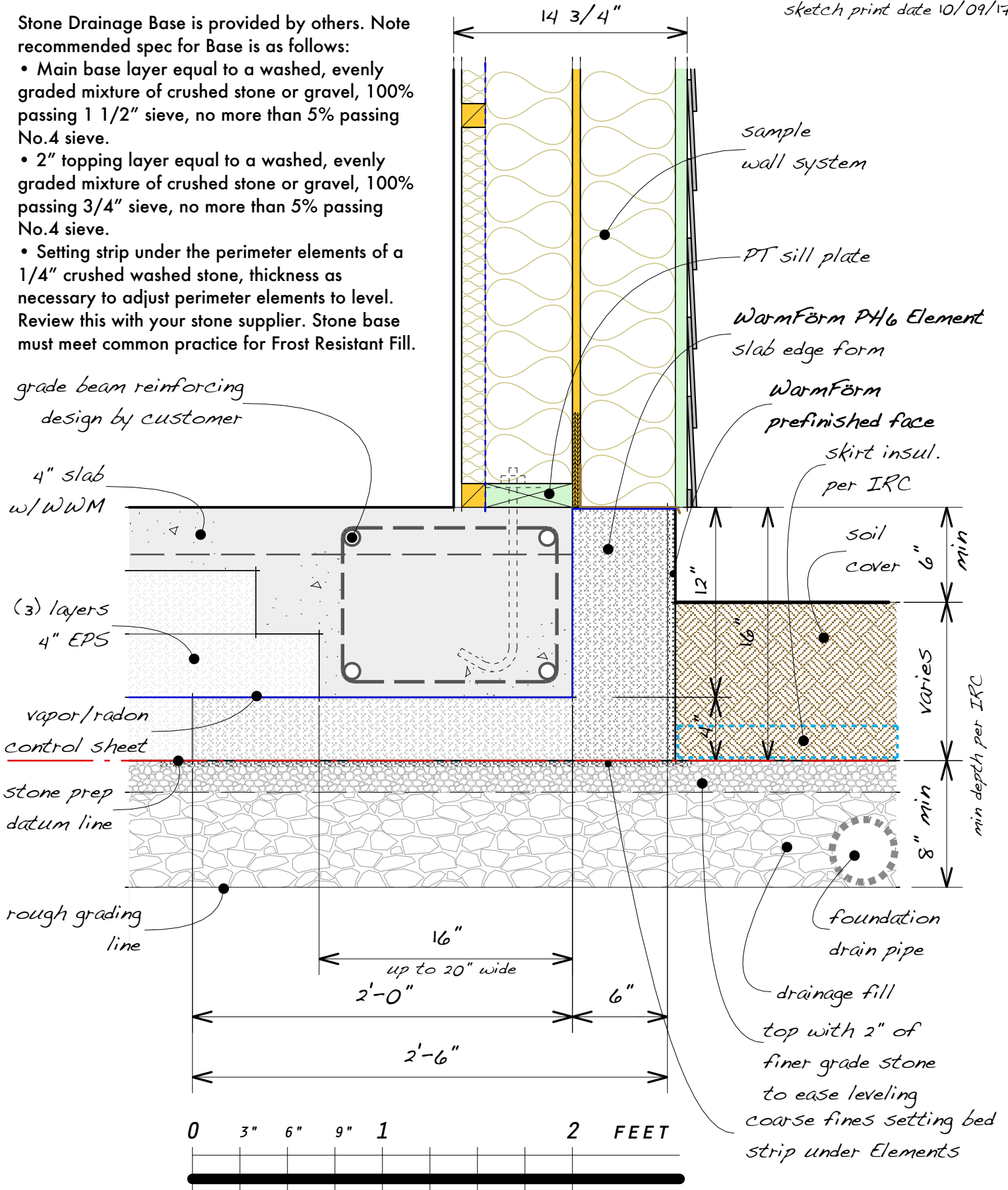
- Main base layer equal to a washed, evenly graded mixture of crushed stone or gravel, 100% passing 1 1/2" sieve, no more than 5% passing No.4 sieve.
- 2" topping layer equal to a washed, evenly graded mixture of crushed stone or gravel, 100% passing 3/4" sieve, no more than 5% passing No.4 sieve.
- Setting strip under the perimeter elements of a 1/4" crushed washed stone, thickness as necessary to adjust perimeter elements to level. Review this with your stone supplier. Stone base must meet common practice for Frost Resistant Fill.



sketch print date 10/09/17

Stone Drainage Base is provided by others. Note recommended spec for Base is as follows:

- Main base layer equal to a washed, evenly graded mixture of crushed stone or gravel, 100% passing 1 1/2" sieve, no more than 5% passing No.4 sieve.
- 2" topping layer equal to a washed, evenly graded mixture of crushed stone or gravel, 100% passing 3/4" sieve, no more than 5% passing No.4 sieve.
- Setting strip under the perimeter elements of a 1/4" crushed washed stone, thickness as necessary to adjust perimeter elements to level. Review this with your stone supplier. Stone base must meet common practice for Frost Resistant Fill.



grade beam reinforcing  
design by customer

4" slab  
w/WWM

(3) layers  
4" EPS

vapor/radon  
control sheet

stone prep  
datum line

rough grading  
line

sample  
wall system

PT sill plate

WarmFörm PH6 Element  
slab edge form

WarmFörm  
prefinished face  
skirt insul.  
per IRC

soil  
cover 6" min

12"

16"

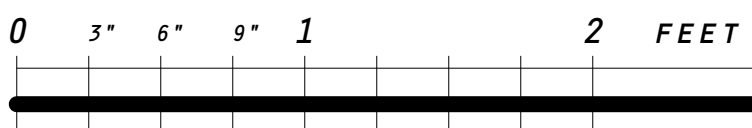
varies

8" min

min depth per IRC

foundation  
drain pipe

drainage fill  
top with 2" of  
finer grade stone  
to ease leveling  
coarse fines setting bed  
strip under Elements



sketch print date 10/09/17

Stone Drainage Base is provided by others. Note recommended spec for Base is as follows:

- Main base layer equal to a washed, evenly graded mixture of crushed stone or gravel, 100% passing 1 1/2" sieve, no more than 5% passing No.4 sieve.
- 2" topping layer equal to a washed, evenly graded mixture of crushed stone or gravel, 100% passing 3/4" sieve, no more than 5% passing No.4 sieve.
- Setting strip under the perimeter elements of a 1/4" crushed washed stone, thickness as necessary to adjust perimeter elements to level. Review this with your stone supplier. Stone base must meet common practice for Frost Resistant Fill.

